

MADONNA DEL CASTELLO

2021 S. Braddock Avenue • Swissvale, PA 15218



PARISH STAFF

Father John Lynam, Pastor

Father Joe Codori, Parochial Vicar

Keith Kondrich, Deacon

Kelly Lisovich, Secretary

Edward Kapsha, Music Director

Patricia Aducci, Coordinator of Religious Ed.

PARISH CONTACTS

Parish Office: 412-271-5666

Fax Number: 412-271-2335

Religious Education Office: 412-271-5666

Music Ministry 412-271-5666

Bp. Dattilo Social Hall 412-271-3959

Website: www.madonnadelcastello.org

BULLETIN DEADLINE

Monday at Noon

RECTORY OFFICE HOURS

9:00 a.m.—5:00 p.m. Monday through Friday

MASS SCHEDULE

Daily 7:30 a.m.

Saturday (vigil mass) 4:00 p.m.

Sunday 10:30 a.m.

Consult the bulletin for Holy Day and Holiday Mass schedule.

ANOINTING OF THE SICK

Sunday's after the 10:30 a.m. Mass.

RECONCILIATION

Saturdays at 10:30 a.m. and by appointment.

BAPTISMS

Call the office for an appointment.

MARRIAGE

Contact the Pastor at least six months in advance.

Mass/Schedule

© J. S. Paluch Co., Inc.

Monday, February 27 7:30 A.M.
 Sam & Sara Maksimchuk (Sam & Theresa Maksimchuk)

Tuesday, February 28 7:30 A.M.
 Lenny Lisjak (Tyler & Trevor Tomko)

Tuesday, February 28 7:00 P.M.
 Holy Hour

Wednesday, February 29 7:30 A.M.
 Louis & Mary Flotta (Olympio & Pierina Grieco)

Thursday, March 1 7:30 A.M.
 Antionette Petrarca (M/M Augustine Cappella)

Friday, March 2 7:30 A.M.
 John Paul Fillippi (Family)

Friday, March 2 7:00 P.M.
 Stations of the Cross

Saturday, March 3 7:30 A.M.
 Intention of the Celebrant

Saturday, March 3 4:00 P.M.
 For Our Parishioners

Sunday, March 4 10:30 A.M.
 Bloise & Aiello Families (Dolly Bloise & Family)



Saturday, March 3 4:00 P.M.
 Nicole O'Dell & Lois Ballog

Sunday, March 4 10:30 A.M.
 Paige Perla & Grace Perla



Saturday, March 3 4:00 P.M.
 Al Haski, Guy Mazzella, Mike Pascal, Ellie Yearsley

Sunday, March 4 10:30 A.M.
 Dan Turner, Karen Turner, Linda Probola, Bill Pfoff



Saturday, March 3 4:00 P.M.
 John Ballog

Sunday, March 4 10:30 A.M.
 Diane Bruno

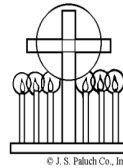
PSP DONATION

In memory of:

ANTIONETTE PETRARCA from Josephine Poklemba.
 CHARLES ROBERTS from Mary Colt.
 LEONARD LISJAK from Josephine Poklemba.
 ANDREW POKLEMBA from Josephine Poklemba.



The Tabernacle Lamp is in memory of
PETE IANNUCCI
 From Mary Iannucci.



The Alter Candles are in memory of
LORENZO & ANNA BARONE
 From Wayne & Joanna Henk & Family.



The Altar Wine is in memory of
ARMAND CAPASSO
 From Babe Capasso.



The Altar Flowers are in memory of
ANTHONY MELE
 From Dorothy Mele.

Anyone who would like to have any or all of the gifts celebrated in memory of or tribute to a loved one(s), should complete the form below, place information and money in a plain envelope and deposit sealed envelope in the collection basket, mail it to the rectory or deposit in the front door mail slot.

Memorial or Living Tribute Request

I would like to offer:

- Altar Flowers (\$50) _____
- Altar Bread (\$25) _____
- Altar Wine (\$25) _____
- Altar Candles (\$10) _____
- Tabernacle Lamp (\$10) _____
- Complete Offering (\$120) _____

In Memory of _____

In Tribute to _____

From _____



THANK YOU

Thank you to Amanda Power for restoring our new Stations of the Cross. Your talents are greatly appreciated.



© J. S. Paluch Co., Inc.

Our Annual fish Fry will be held Fridays during Lent (except Good Friday) in our social hall from Noon to 7:00 P.M. Baked or fried cod dinners, sandwiches, haluski, macaroni & cheese, pasta e fagiole, apple-sauce, bread & butter & beverages are available. Children's menu and take out orders available. Deliveries available within a reasonable distance until 3:00 P.M.

Also, we are asking for donations of noodles, cabbage, onions, sugar & flour. You can drop these items off at the social hall before or after all weekend masses or call Lois Petrarca (412-371-9458) or Mary Iannucci (412-371-4912).

We will be needing baked goods for Ash Wednesday & Lenten Fridays. Call Karen Sarsfield (724-325-4849) or Mary Iannucci (412-371-4912).

We also need volunteers to help with this year's Fish Fry—Setting up, cooking, serving, drivers to deliver take out orders and for clean up. There will be sign up sheets in the hall.

STATIONS OF THE CROSS

Stations of the Cross and Holy Hour are held during Lent on Fridays at 7 p.m. in church.

DEVOTIONAL BOOKLET FOR LENT

There are devotional booklets available to parishioners in the back of church for Lent. The Little Black Book and the Stations of the Cross booklets.

NATURAL FAMILY PLANNING

NFP is a morally acceptable means for married couples to use to space the conception of children & as a morally acceptable treatment option for couples enduring the pain of infertility. Promoters will be trained in both the scientific basis of NFP & the theological aspect of human sexuality in order to share the beauty of these truths with others. The next workshop is Saturday, March 10th, 8:30-3:30, Gilmary Center, 601 Flaugherty Rd. Coraopolis. Registration forms are in the literature racks. Deadline is Thursday, March 1.

MONTHLY COLLECTIONS

December Regular offertory	\$17,062.00
PSP collected	\$3,392.00
PSP owed	\$11,048.00
January regular offertory	\$18,451.03
PSP collected	\$2,996.00
PSP owed	\$8,052.00

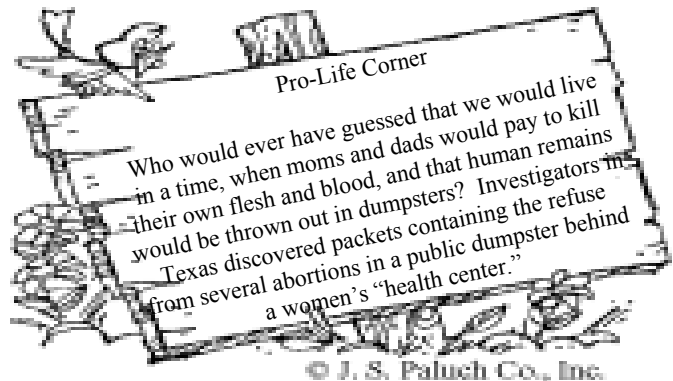
MORNING OF REFLECTION

Morning of Reflection for men, women, high school and older: "Deepening Your Prayer Life - Teachings from Pope Benedict XVI," Sunday, March 18th, 10 am to the lunch at 12:30 p.m., Word of God Parish, O'Connell Hall, 7444 McClure Ave., Swissvale. Presenters: Regis Flaherty and Carole DeClaudio from the Gilmary Retreat Center. Books for sale. \$10/person includes catered lunch. Sitter care planned for registrants. Registration and payment required by noon, Monday, March 12th. Registration forms available in the literature racks or by contacting Ron Demblowski at the rectory (412.241.1372) or wordof-godpa@gmail.com.

Thanks to our advertisers who sponsor this bulletin.
Support them with your business.

ADVERTISER OF THE WEEK

MELE BROS./SISTER FLORIST
MARY MELE ABEL
520 BRADDOCK AVE.—BRADDOCK
412-351-1621



© J. S. Paluch Co., Inc.